

Directions

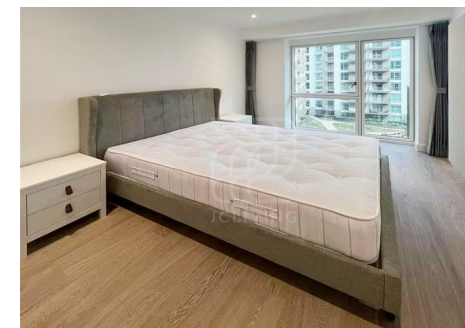
Viewings

Viewings by arrangement only. Call 02033696888 to make an appointment.

EPC Rating

B

Energy Efficiency Rating		Current	Potential
Very energy efficient - lower running costs			
(92 plus) A			
(81-91) B		85	85
(69-80) C			
(55-68) D			
(39-54) E			
(21-38) F			
(1-20) G			
Not energy efficient - higher running costs			
England & Wales		EU Directive 2002/91/EC	



ML126, Apartment 507, Ellipse House 2 Eden Place, London, E16 1JN

£510 Per Week

Ellipse House 2 Eden Place, London E16 1JN

Please quote reference JC26042057 when contacting the office

JCLiving is proud to present this stunning one-bedroom, one-bathroom apartment at Ellipse House, 2 Eden Place, London E16.

Situated in the iconic Ellipse House – the landmark tower of the award-winning Royal Eden Docks development by Mount Anvil – this contemporary apartment offers the perfect combination of modern design, comfort, and convenience in the heart of London's Royal Docks.

The location offers superb connectivity. Custom House Station (Elizabeth Line and DLR) is just a 3-minute walk away, providing access to Canary Wharf in 3 minutes, Liverpool Street in 10 minutes, and Bond Street in 17 minutes. Canning Town Station (Jubilee Line & DLR) is also approximately a 10-minute walk away. The vibrant Royal Docks waterfront, ExCeL London, and Canary Wharf's dining, retail, and cultural attractions are all within easy reach.

EPC Rating: B



Council Tax Band: D

